



RESEARCH GUIDE

Korean Society in Change: Statistics and Sources (III)

Compiled by Ou-Byung Chae, *Managing Editor*

Jung-Hae Choi, *Editorial Assistant*

In the previous two issues, as an editorial service to readers, we provided statistics that illustrate some salient tendencies in the rapidly changing Korean society. Although not exhaustive, the statistics covered many sociological topics pertaining to the life of the Korean population, such as the suicide rate, class, economic life, education, welfare, and cultural life. In this research guide, we proceed to the more specific issue of gender. Similar to the earlier issues, we do not intend to provide comprehensive statistics to the readers; instead, we present some select gender statistics that illuminate important sociological tendencies in gender relations in Korean society.

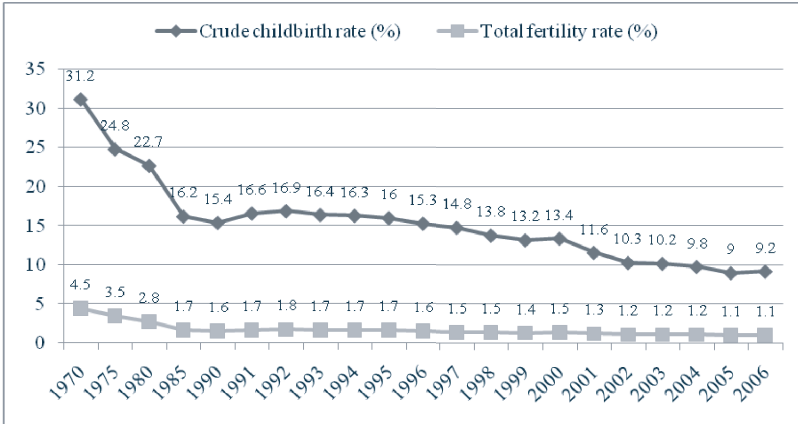
Over the past decades of rapid social change in Korea, women's lives have changed considerably. On the one hand, the change involved general improvements in women's status. As important indices, women's levels of education and participation in economic activity have steadily increased (Figures 3 and 4). In particular, the M-shaped pattern indicating women's economic activity by age has ameliorated gradually (Figure 5). On the other hand, less positive aspects can also be found in this change. Although women's participation in economic activity has increased, in comparison to male workers, many of them are employed as irregular workers (Figure 7). In 2005, as a group, the wages of female workers stood at about 60% of the wages received by male workers (Figure 6). The gender wage gap has decreased over the past decades; however, the rate at which the gender wage gap is closing has decelerated since the beginning of the 1990s (Figures 6 and 8). Furthermore, the number of beneficiaries of childcare and maternity leave is very low in contemporary Korean society (Table 2). It is likely that amid these positive and less positive changing patterns, the choices of women are reflected in the increasing divorce rate and decreasing fertility rate (Figures 1 and 2).

We will not provide any further interpretations to the readers. We do not want to limit the many possible interpretations of the data presented in the figures and tables presented below. We have organized the gender statistics by population, education, economic activity, welfare, political and social participation, and culture. In addition to the data sources provided earlier, we provide another useful data source for online gender statistics serviced by the Korean Women's Development Institute.

STATISTICS

Population

Figure 1. Birth rate and Fertility Rate

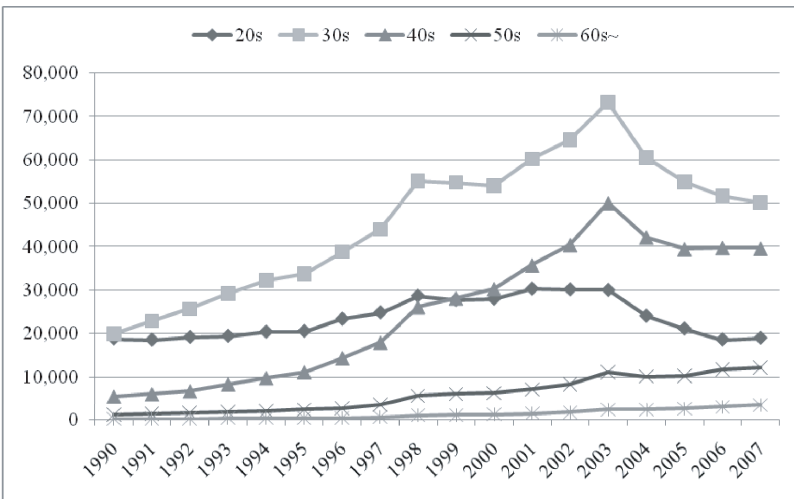


Source | National Statistical Office, *Annual Report on the Vital Statistics*.

Note | 1. Total fertility rate indicates the number of children that one woman may deliver when she experiences the exact age-specific fertility rates (ASFR) at the time of the survey during her reproductive period.

2. Crude live-birth rate (%) = total births in a specific year / Mid-year population in said year x 1,000

Figure 2. Number of Divorce Cases by Bride's Age



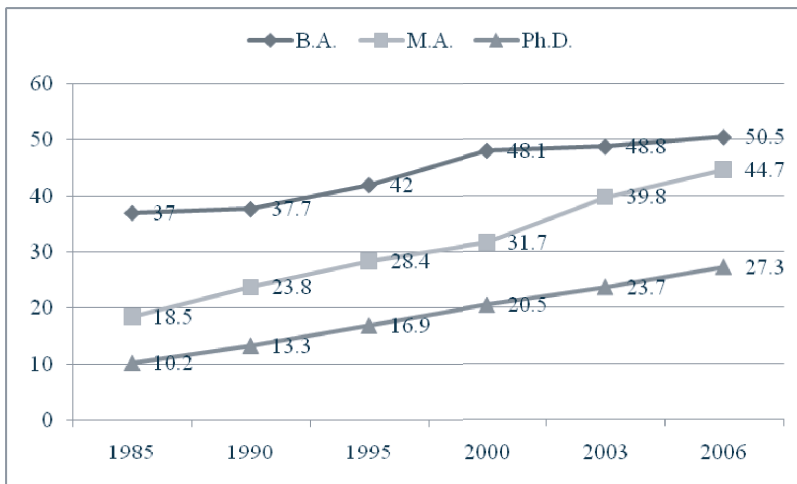
Source | National Statistical Office, KOSIS DB.

Table 1. Marriages with Foreign Brides

	China	Japan	Mongol	Philippines	Russia	Thailand	US	Vietnam	Others	Total
2001	7,001	976	118	510	157	185	265	134	660	10,006
2002	7,041	959	195	850	241	330	267	476	658	11,017
2003	13,373	1,242	318	944	297	346	323	1,403	968	19,214
2004	18,527	1,224	504	964	318	326	344	2,462	925	25,594
2005	20,635	1,255	561	997	236	270	285	5,822	1,119	31,180
2006	14,608	1,484	593	1,157	206	273	334	10,131	1,422	30,208
2007	14,526	1,665	745	1,531	156	531	377	6,611	2,998	29,140

Source | National Statistical Office, KOSIS DB.

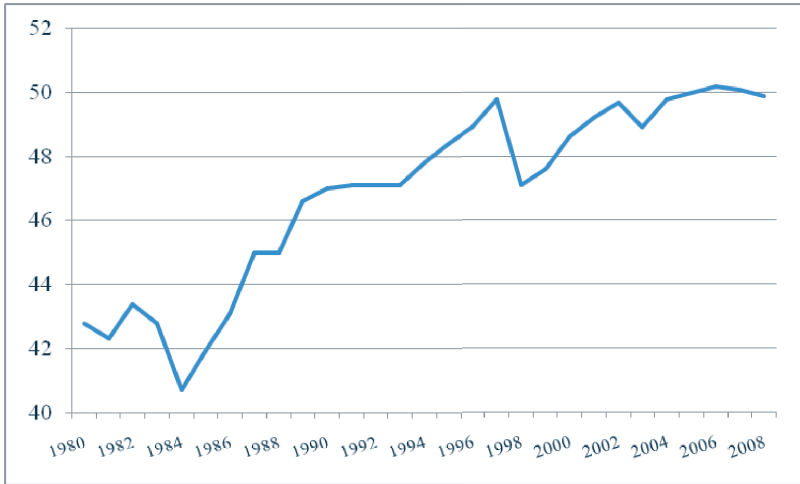
Education

Figure 3. Percentage of Female Graduates in Post-secondary Education

Source | Ministry of Education, *Statistical Yearbook of Education*.

Economic Activity

Figure 4. Female Economic Participation Rate



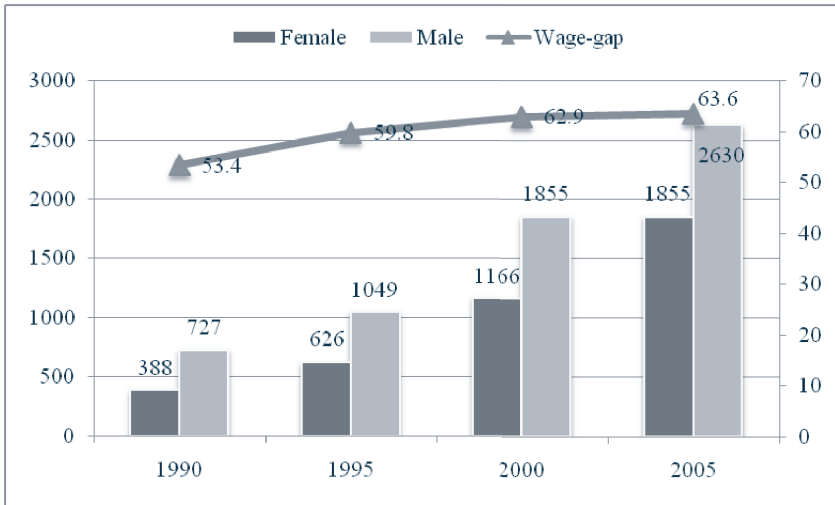
Source | National Statistical Office, *Annual Report on the Economically Active Population Survey*.

Figure 5. Female Economic Participation Rate by Age



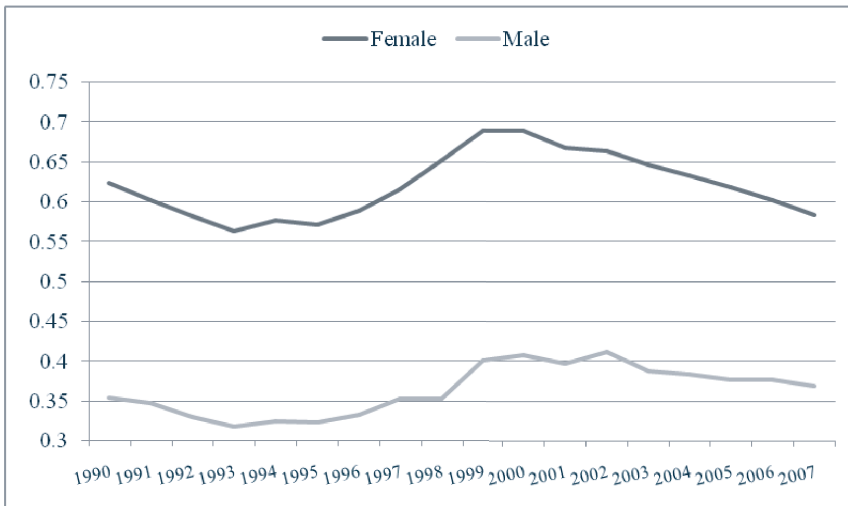
Source | National Statistical Office, *Annual Report on the Economically Active Population Survey*.

Figure 6. Mean Monthly Wage of Men and Women



Source | Ministry of Labor, *Survey Report on Wage Structure*.

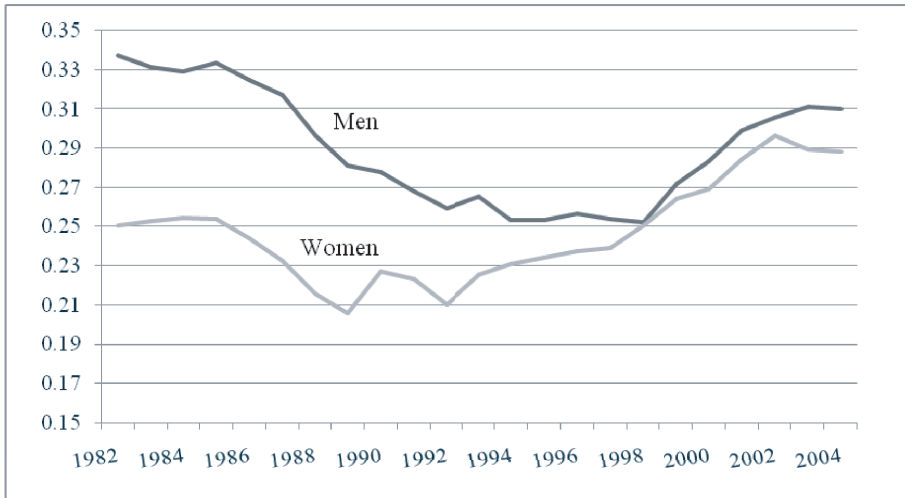
Figure 7. Percentage of Irregular Workers among Employees by Sex



Source | National Statistical Office, *Annual Report on the Economically Active Population Survey*.

Note | Irregular workers include temporary employees and daily workers.

Figure 8. Wage Inequality Measured by Gini-Index



Source | Ministry of Labor, *Survey Report on Wage Structure*.

Welfare

Table 2. Beneficiaries of Maternity Leave and Childcare Leave

	Maternity Leave		Childcare Leave	
	Beneficiaries (person)	Amount of income/outgo (won)	Beneficiaries (person)	Amount of income/outgo (won)
2004	38,541	41,609,914,810	11,938	20,477,593,950
2005	41,104	46,040,970,480	14,102	27,755,072,000
2006	48,970	90,885,791,740	18,661	33,988,935,680

Source | Ministry of Gender Equality & Family, *Yearly Statistics of Employment Insurance*.

Political and Social Participation

Table 3. Percentage of Female Public Officials in National Agency

	Executive Branch	Judicial Branch	Legislative branch	The Constitutional Court
1983	21.4	32.8	17.8	33.3
1989	22.7	19.2	32.7	27.8
1991	24.6	21.2	31.8	28
1992	25.6	29.4	21.5	28.4
1993	26.6	30.2	21.7	29.1
1994	26.5	30.6	22	28.8
1995	27.3	22	31.2	28.2
1996	27.9	22.7	29.4	29.6
1997	28.8	21.8	30.7	30.2
1998	29.8	22	32.3	30.5
1999	29.8	21.8	32.1	30.9
2000	31.7	23	41	29.7
2001	33	23.9	41.8	31
2002	33.1	24.1	42.6	33
2003	34.1	25.1	31.8	34

Source | Ministry of Government Administration and Home Affairs, *Yearbook of Ministry of Administration and Home Affairs*.

Table 4. Percentage of Female Public Officials in Central Government and Local Autonomous Entity by Occupational Grade

By Occupational Grade	Central Government		Local Autonomous Entity	
	Female Ratio (%)	Total (person)	Female Ratio (%)	Total (person)
Total	43.8	582,837	27.2	272,584
-Administrative position	22.4	95,835	31.7	188,845
-Privileged government position	20.8	2,492	61.4	3,632
-Special service	49.1	439,538	5.6	30,513
-Political position	6.0	133	1.2	250
-Fixed-term employment	38.4	1,481	38.0	2,604
-Technical position	39.1	43,358	23.2	46,737

Source | Ministry of Government Administration and Home Affairs, *Yearbook of Ministry of Administration and Home Affairs 2005*.

Table 5. Participation Rate in Social Group by Sex

By Age/Edu/Marital Status		Participant (%)		Social meetings (%)		Religious Organizations (%)		Hobby, leisure group (%)		Civic/Social group (%)		Academic society (%)	
		F	M	F	M	F	M	F	M	F	M	F	M
By Age	15~19	19.7	18.9	57.3	53.6	22.7	20.9	31.5	52.3	22	14.6	9.8	8
	20~29	33.5	31.8	74.8	73.6	20.4	15.1	33.3	45.9	9.2	6.3	8.6	7.1
	30~39	36.3	42.4	75.5	80.9	25.1	12.5	27.3	41.2	11	8.1	4.1	4.2
	40~49	45.1	49.2	76.8	82.9	29.3	15.2	22.7	33.4	14.3	13.3	2	4.2
	50~59	47.6	49.9	82	85.4	31.9	18.3	14.7	23.5	10.9	13.3	1.1	2.9
	60	29.6	41.2	76.1	86.1	35.3	17.5	9.7	14.8	5.1	8.5	0.3	1.8
By Education	Elementary	28.5	32.7	80.5	87.4	27	13	7.6	10.4	5.5	7.9	0.1	0.2
	Middle school	33.8	30.7	76.5	79.3	27.4	14.4	15.5	22.7	11.9	12.4	0.6	0.6
	High school	38.5	40.6	75.7	80.8	28.3	13.5	24.6	33.4	13.6	11.2	3.1	2.7
	College~	43.4	49.7	74.1	80	28.7	19.2	32.1	41.4	10.5	9.7	7.3	7.8
By Marital Status	Unmarried	31.0	28.8	69.1	71	21.5	15.3	35.2	45.2	12.7	7.6	9.6	7.1
	Married	38.5	46.5	78.1	83.8	29.8	15.8	19	29.7	10.6	11.3	1.8	3.3
	Total	36.6	41	76.2	81	28.1	15.7	22.3	33.1	11	10.5	3.4	4.1

Source | National Statistical Office, Social Statistics Survey 2006.

Table 6. Recognition of Sexual Discrimination in Social Life

By Age/Edu/Marital Status		Female	Male
By Age	15~19 Years old	30.8%	14.5%
	20~29 Years old	42.1	21.3
	30~39 Years old	44.7	30.9
	40~49 Years old	29.2	26.2
	50~59 Years old	19.6	19.3
	60 Years old & over	13.9	15.7
By Education	Elementary school graduates & under	14.9	14.3
	Middle school graduates	24	16.6
	High school graduates	37.4	23.7
	College, university graduate & over	49.5	30.6
By Marital Status	Unmarried	37.5	18.3
	Married	29.6	25.3
Total		31.5	23

Source | National Statistical Office, *Social Statistics Survey 2005*.

Note | The number is the proportion of respondents who marked the highest rank (on the scale of 5) for a question asking subjective perception of sexual discrimination in social life.

Culture

Table 7. Summary on Time Use Survey Average Time Spent on Activities, Population Age 10 & over

By Activity	Week average Females (hours)	Week average Males (hours)
ALL ACTIVITIES	24:00	24:00
1 Personal care	10:34	10:35
2 Employment	2:34	4:20
3 Learning	1:09	1:19
4 Household care	2:29	0:22
5 Family care	0:42	0:10
6 Participation and volunteer	0:03	0:04
7 Leisure	4:46	5:10
8 Travel (by purpose)	1:30	1:51
9 Others	0:14	0:10
A Time at home	15:57	13:16

Source | National Statistical Office, KOSIS DB 2005.

Table 8. Types of Leisure Activities on Weekend or Holidays

By Age/Edu/Marital Status		Watching TV(%)		Travel (%)		Theaters (%)		Computer game (%)		Housework (%)		Rest & Sleep (%)	
		F	M	F	M	F	M	F	M	F	M	F	M
By Age	15~19	56	50	3	2	13	6	42	59	5	2	41	33
	20~29	52	45	11	9	23	11	22	43	22	6	43	41
	30~39	49	55	15	18	9	7	9	23	59	20	40	51
	40~49	48	57	9	16	4	3	6	12	59	18	45	53
	50~59	49	56	8	15	2	2	3	8	57	16	41	53
	60	56	62	3	8	0	1	0	3	44	16	41	50
By Education	Elementary	55	61	2	5	0	1	2	7	48	16	44	57
	Middle school	53	57	5	6	5	3	16	27	40	10	42	47
	High school	52	55	9	12	8	5	13	24	48	13	41	49
	College~	46	51	16	19	17	8	11	20	42	18	41	46
By Marital Status	Unmarried	53	48	8	8	21	9	29	45	10	5	43	41
	Married	51	58	9	15	4	3	5	11	56	19	41	52
Total		51	55	9	13	8	5	11	22	45	14	42	48

Source | National Statistical Office, *Social Statistics Survey 2007*.

SOURCE

Source	Korean Women's Development Institute
URL	www.kwdi.re.kr
Description	<p>Korean Women's Development Institute runs its own statistical database called Gender Statistics Information System. It provides a wide range of gender statistics categorized by</p> <ul style="list-style-type: none"> - Population - Family - Childcare - Education - Economic Activity - Health - Welfare - Political & Social Activity - Culture & Information - Safety
Language Support	Korean English
