



RESEARCH GUIDE

Korean Society in Change: Statistics and Sources (I)

Compiled by Ou-Byung Chae, *Managing Editor*

Jung-Hae Choi, *Editorial Assistant*

Korea has experienced rapid change, in every aspect of society, for the past five or six decades. One of the earlier forms of social change in Korea was initiated and represented by rapid industrialization and urbanization, followed by democratization in the late 1980s, and globalization in the contemporary era. In this article, we provide some key statistics that present a snapshot of some of the changing aspects in Korean society; we also introduce some online sources for obtaining various forms of data, for scholars and researchers who are interested in sociological issues in Korean society. Regardless of differences in methodological or theoretical approaches, we hope that the statistics and data sources provided in this article will guide readers to further research.

The following pages are composed of two sections. In the first section, drawing on statistical data from the Korean Statistical Information Service (KOSIS – see below for more information), we offer some key descriptive statistics for a changing Korean society. Instead of presenting general and comprehensive statistics, which can be easily accessed elsewhere (e.g. OECD homepage), this article offers statistics that capture some salient aspects of contemporary social change in Korea. As readers may notice, the statistics presented below are not exhaustive. In the next issue(s), we will incorporate other important statistics missing in this article. The second section provides a comprehensive list of online data sources. These sources include government, government-sponsored, and private research institutes and libraries; the data electronically available from these sources range from qualitative to quantitative, from historical to contemporary, and from general to specific.

STATISTICS

The tables and figures in this section are organized by population, economic life, and education. Other important indices, including social welfare, culture, and democratization, will be presented in the next issue.

Population

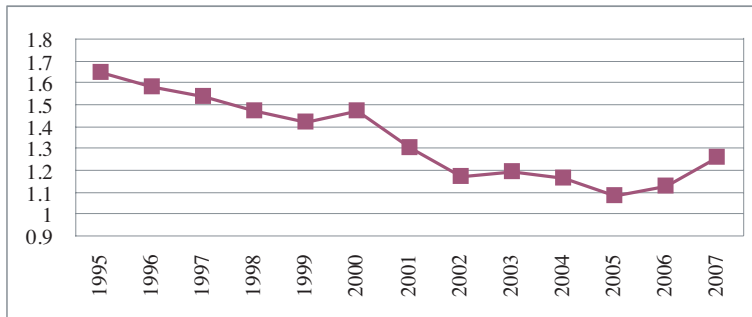
While it is true that Korean society has witnessed a rapid change, it may be a mistake to see it as a unilinear process. Rather, it is the dynamism of rupture, reversal, and the advent of unprecedented tendency. In overall demographic change, this can be observed in fertility rates, the percentage of the population over 65 years old, divorce rates, and the increase of foreigners in Korea.

Fertility Rates

Unit: Person

Annual	Total fertility rates	Annual	Total fertility rates
1995	1.65	2002	1.17
1996	1.58	2003	1.19
1997	1.54	2004	1.16
1998	1.47	2005	1.08
1999	1.42	2006	1.13
2000	1.47	2007	1.26
2001	1.3		

Fertility Rates

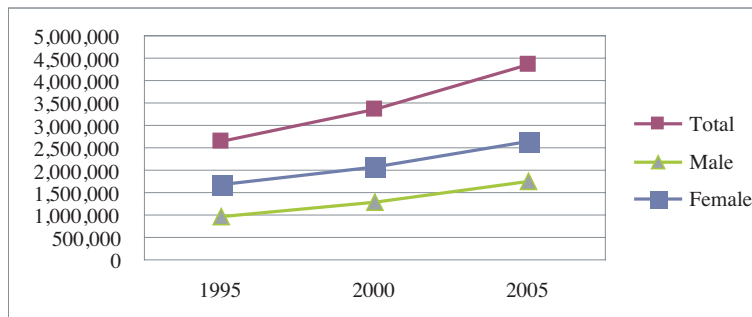


Population over 65 Years Old by Sex

Unit: Person

Age	Sex	1995	2000	2005
65 Years old (person)	Total	2,640,205	3,371,806	4,365,218
	Male	974,704	1,287,397	1,736,346
	Female	1,665,501	2,084,409	2,628,872
Mean age	Total	-	33.3	35.6
	Male	-	32.1	34.4
	Female	-	34.5	36.8

Population over 65 Years Old by Sex

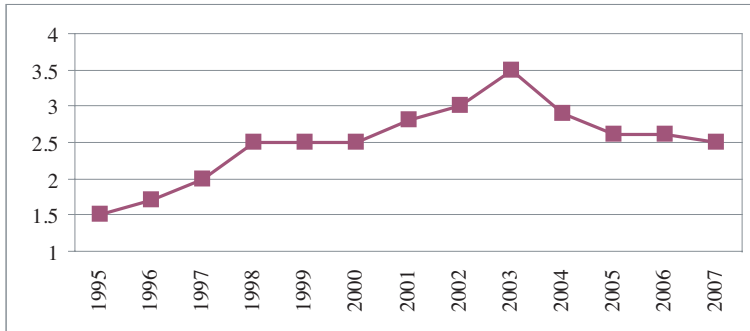


Divorce Rates

Unit: 1000 Persons

Annual	Divorces rates	Annual	Divorces rates
1995	1.5	2002	3
1996	1.7	2003	3.5
1997	2	2004	2.9
1998	2.5	2005	2.6
1999	2.5	2006	2.6
2000	2.5	2007	2.5
2001	2.8		

Divorce Rates

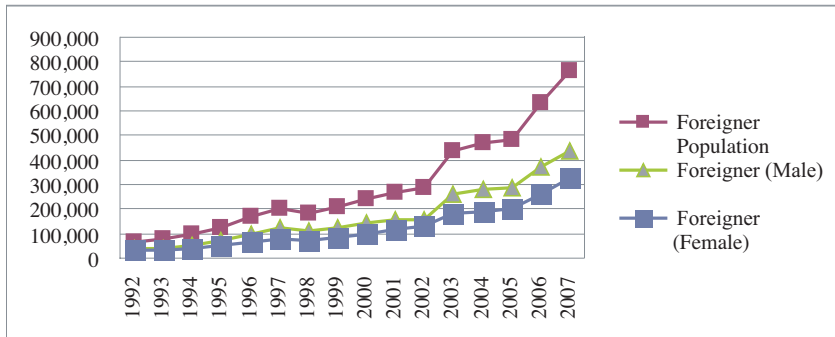


Foreigner Resident Registration Population

Unit: Person

Annual	Foreigner Population	Foreigner (Male)	Foreigner (Female)
1992	65,673	36,175	29,498
1993	76,374	42,332	34,042
1994	95,778	54,917	40,861
1995	123,881	70,755	53,126
1996	167,664	99,813	67,851
1997	201,186	122,798	78,388
1998	182,788	107,980	74,808
1999	206,895	121,135	85,760
2000	244,172	143,177	100,995
2001	267,630	153,449	114,181
2002	287,923	159,356	128,567
2003	437,014	257,628	179,386
2004	469,183	278,377	190,806
2005	485,477	283,998	201,479
2006	632,490	370,728	261,762
2007	765,429	438,660	326,769

Foreigner Resident Registration Population



Economic Life

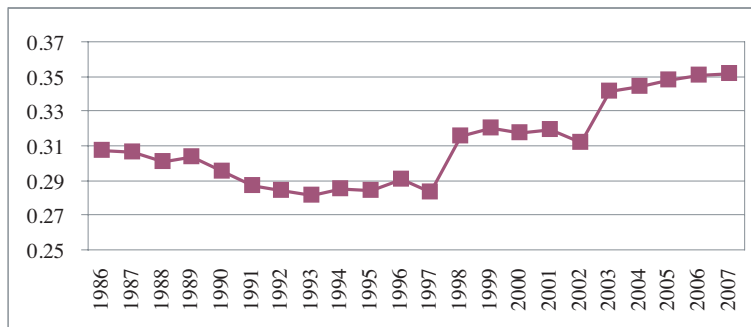
We present four noteworthy trends in economic life since democratization in the late 1980s or (and) since the economic restructuring impelled by the financial crisis in the late 1990s: the Gini's coefficient as an indicator of social inequality, changes in employed persons by industry, status of employed persons, and labor unions and unionized members.

Gini's Coefficient

Unit: 1000 Persons

Annual	Gini's Coefficient	Annual	Gini's Coefficient
1986	0.307	1997	0.283
1987	0.306	1998	0.316
1988	0.301	1999	0.32
1989	0.304	2000	0.317
1990	0.295	2001	0.319
1991	0.287	2002	0.312
1992	0.284	2003	0.341
1993	0.281	2004	0.344
1994	0.285	2005	0.348
1995	0.284	2006	0.351
1996	0.291	2007	0.352

Gini's Coefficient

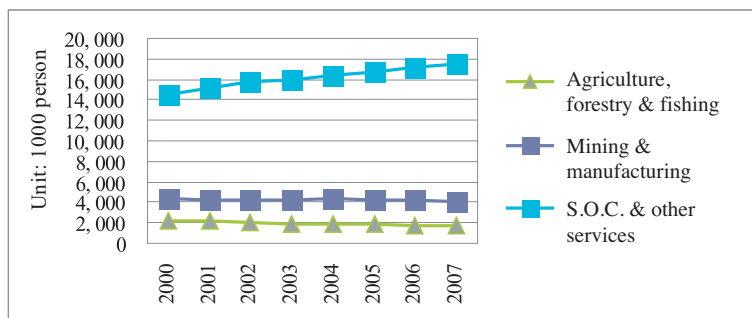


Employed Persons by Industry

Unit: Person

Industry	2000	2001	2002	2003	2004	2005	2006	2007
Total	21,156	21,572	22,169	22,139	22,557	22,856	23,151	23,433
Agriculture, forestry & fishing	2,243	2,148	2,069	1,950	1,825	1,815	1,785	1,726
Mining & manufacturing	4,310	4,285	4,259	4,222	4,306	4,251	4,185	4,137
S.O.C. & other services	14,603	15,139	15,841	15,967	16,427	16,789	17,181	17,569

Employed Persons by Industry

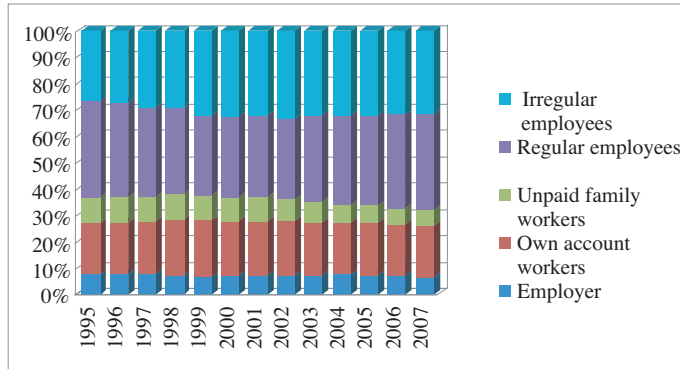


Workers by Employment Status

Unit: Person

	1995	1996	1997	1998	1999	2000	2001	2002	2003	2004	2005	2006	2007
Total	20,414	20,853	21,214	19,938	20,291	21,156	21,572	22,169	22,139	22,557	22,856	23,151	23,433
Unpaid workers	7,515	7,653	7,810	7,641	7,628	7,795	7,913	7,988	7,736	7,663	7,671	7,600	7,463
Employer	1,520	1,605	1,639	1,392	1,351	1,458	1,554	1,617	1,629	1,679	1,664	1,632	1,562
Own account workers	4,049	4,105	4,262	4,225	4,351	4,407	4,497	4,574	4,413	4,431	4,508	4,503	4,487
Unpaid family workers	1,946	1,943	1,908	2,025	1,925	1,931	1,863	1,797	1,694	1,553	1,499	1,466	1,413
Wage & salary workers	12,899	13,200	13,404	12,296	12,663	13,360	13,659	14,181	14,402	14,894	15,185	15,551	15,970
Regular employees	7,499	7,499	7,282	6,534	6,135	6,395	6,714	6,862	7,269	7,625	7,917	8,204	8,620
Irregular employees	5,400	5,701	6,122	5,762	6,529	6,965	6,944	7,319	7,134	7,270	7,268	7,347	7,350

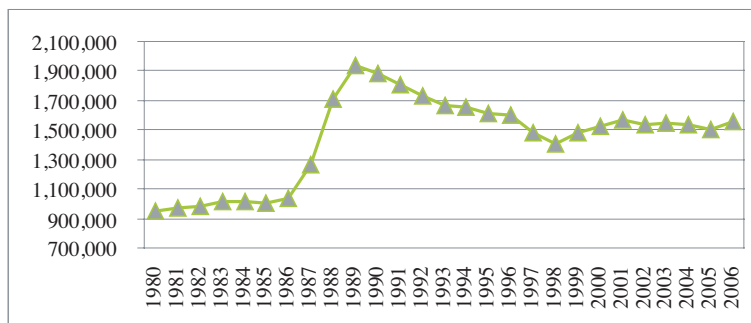
Workers by Employment Status



Labor Unions & Unionized Members

Annual	No. of unit unions	No. of union membership (person)	Annual	No. of unit unions	No. of union membership (person)
1980	2,618	948,134	1994	7,025	1,659,011
1981	2,141	966,738	1995	6,606	1,614,800
1982	2,194	984,136	1996	6,424	1,598,558
1983	2,238	1,009,881	1997	5,733	1,484,194
1984	2,365	1,010,522	1998	5,560	1,401,940
1985	2,534	1,004,398	1999	5,637	1,480,666
1986	2,658	1,035,890	2000	5,698	1,526,995
1987	4,086	1,267,457	2001	6,150	1,568,723
1988	5,598	1,707,456	2002	6,506	1,538,000
1989	7,861	1,932,415	2003	6,257	1,549,949
1990	7,698	1,886,884	2004	6,017	1,536,843
1991	7,656	1,803,408	2005	5,971	1,506,172
1992	7,531	1,734,598	2006	5,889	1,559,179
1993	7,147	1,667,373			

Union Membership



Education

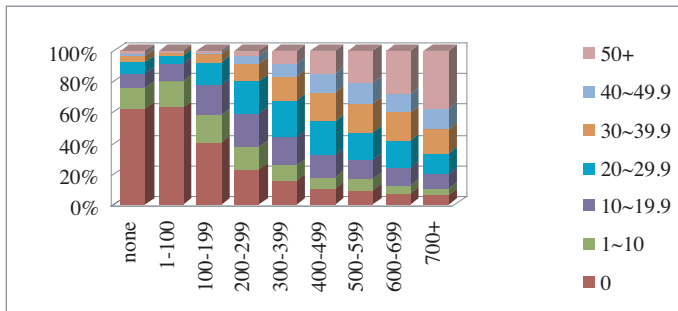
In recent years, the private education market has dramatically expanded. Longitudinal data for the expansion of the private education market are not available, but data for monthly private education expenditure, by household income, clearly show that private education expenditure is correlated with social stratification. Another salient trend in education is the continuous increase in the rates of college and university entrants since the early 1990s.

Distribution of Private Education Expenditure per Month by Household Income (2007)

Unit: %

Household income	Total	Not getting a private education	Less than 10 thousand won	10~19.9	20~29.9	30~39.9	40~49.9	50 thousand won and over
No economic activity	100	62.9	12.8	10.2	7.3	3.5	1.7	1.6
Less than 100	100	63.1	17	11.5	5.4	1.8	0.7	0.6
100-199	100	40.3	18.1	20.1	14	4.9	1.4	1.1
200-299	100	23	14	21.9	21.8	11.5	4.5	3.3
300-399	100	15.6	9.9	18.5	23.8	15.9	8	8.4
400-499	100	10.8	7	14.9	21	19.1	12.3	14.8
500-599	100	9.5	6.7	12.6	17.8	18.8	13.6	21
600-699	100	7.3	4.9	11.3	17.9	18.5	12.2	27.9
700 and over	100	6.5	4.1	9.4	13	15.9	13.6	37.5

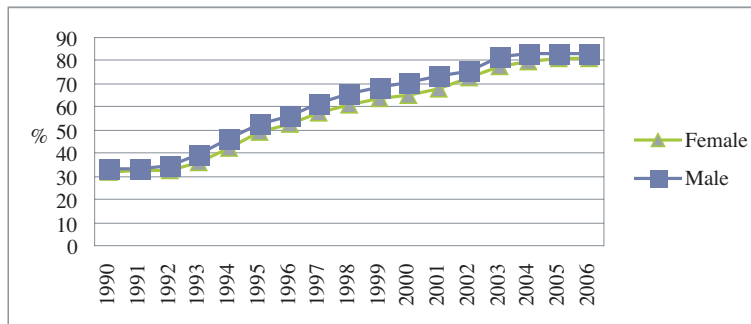
Private Education Expenditure per Month by Household Income



College and University Entrance Rates

Unit: %

Annual	Total	Female	Male	Annual	Total	Female	Male
1990	33.2	31.9	33.3	1999	66.6	63.5	68.7
1991	33.2	32.3	33.2	2000	68.0	65.4	70.4
1992	34.3	32.7	34.8	2001	70.5	67.6	73.1
1993	38.4	36.2	39.4	2002	74.2	72.4	75.8
1994	45.3	42.4	46.7	2003	79.7	77.8	81.5
1995	51.4	49.5	52.3	2004	81.3	79.7	82.8
1996	54.9	52.7	56.1	2005	82.1	80.8	83.3
1997	60.1	57.4	61.7	2006	82.1	81.1	82.9
1998	64.1	61.2	65.7				

College and University Entrance Rates**SOURCES**

This section presents a list of 21 online sources of various data, organized by independent tables. Each table contains the name of the source institute or library, the URL, a brief description of electronically available data, and language support.

Source	Korea National Statistical Office
URL	http://www.nso.go.kr/eng2006/emain/index.html
Description	<ul style="list-style-type: none"> - Compiles 1,055 products by 370 entities, including central and local government agencies, and private institutions - Compiles 479 products by central governmental agencies (including 65 by the National Statistical Office), 390 by local governmental agencies, and 186 by private institutions - Of which, the number of designated statistics is 95 and general statistics 960 - The number of survey statistics derived from practical investigation is 382, administrative statistics derived from administrative records is 604, and analytic statistics is 69
Language Support	Korean English

Source	Korea National Statistical Office
URL	http://www.nso.go.kr/eng2006/emain/index.html
Description	<ul style="list-style-type: none"> - Compiles 1,055 products by 370 entities, including central and local government agencies, and private institutions - Compiles 479 products by central governmental agencies (including 65 by the National Statistical Office), 390 by local governmental agencies, and 186 by private institutions - Of which, the number of designated statistics is 95 and general statistics 960 - The number of survey statistics derived from practical investigation is 382, administrative statistics derived from administrative records is 604, and analytic statistics is 69
Language Support	Korean English
Source	Korean Statistical Information Service (KOSIS)
URL	http://www.kosis.kr/
Description	Prepared by the Korea National Statistical Office; KOSIS is constructing a unified database of more than 700 approved statistics from more than 160 statistical research institutes.
Language Support	Korean
Source	Ministry of Knowledge and Economy
URL	http://www.mke.go.kr/index2.html
Description	Basic statistics are available on this website.
Language Support	Korean Chinese English Japanese
Source	Ministry of Gender Equality
URL	http://www.mogef.go.kr/html/sub05/sub05_51.jsp?id=kf0701&menuID=kf0701&deptcode
Description	Basic statistics and indices regarding women and gender equality are electronically available.
Language Support	Korean English

Source	Ministry of Culture, Sports, and Tourism
URL	http://www.mcst.go.kr/web/dataCourt/statisticsData/statisticsList.jsp
Description	The Ministry of Culture, Sports, and Tourism provides materials on policy decision making, research papers, reports, legal acts, statistics, and e-books.
Language Support	Korean
Source	Ministry of Education, Science and Technology
URL	http://english.mest.go.kr/main.jsp?idx=040101
Description	Drawing on the working-draft of The Basic Statistics on Educational Administration (Ministry of Education and Human Resources Development) and the 2004 Statistical Yearbook of Education (Ministry of Education and Human Resources Development, and the Korean Educational Development Institute), this website provides various education-related statistics.
Language Support	Korean English
Source	Ministry for Food, Agriculture, Forestry and Fisheries
URL	http://english.mifaff.go.kr/index.jsp
Description	The Ministry for Food, Agriculture, Forestry, and Fisheries website contains basic information on Korean agriculture, statistics, and multimedia data.
Language Support	Korean English
Source	Ministry of Environment
URL	http://eng.me.go.kr/docs/common/common_list.html?mcode=20&classno=10&topmenu=E
Description	This website provides statistics drawn from the Environmental Statistics Yearbook.
Language Support	Korean English
Source	Ministry of Labor – Labor Statistics of Korea
URL	http://laborstat.molab.go.kr/
Description	The Ministry of Labor runs its own database. Through their digital library, you can access recent labor market indicators and employment and labor statistics.
Language Support	Korean English

Source	Ministry of Land, Transportation and Maritime Affairs
URL	http://www.mltm.go.kr/Statistic/Total/list.jsp?&MID=MM061
Description	The Ministry of Land, Transportation, and Maritime Affairs provides public data (construction, land, transportation), the Acts regarding construction and transportation, and annual reports.
Language Support	Korean English
Source	The Bank of Korea Economic Statistics System (ECOS)
URL	http://ecos.bok.or.kr/
Description	ECOS provides basic economic statistics concerning the main sectors of the Korean economy and basic data such as: money and interest rates, national income, prices, balance of payments, flow of funds, business and consumer surveys, financial statement analysis, and input-output tables.
Language Support	Korean English
Source	Institute Knowledge Inventory System (IKIS)
URL	http://www.ikis.re.kr/jsp/main.jsp?refUrl=eng
Description	The Knowledge Database (IKIS) for Government-Sponsored Research Institutes is composed of the following research and policy papers: - The Korea Council of Economic and Social Research Institutes (KCESRI) - The Korea Council of Humanities and Social Research Institutes (KCHSRI) - The IKIS includes research products trends for industry economy, real things, policy, management, and technology for both within and outside of the country.
Language Support	Korean English
Source	Korea Research Institute for Vocational Education & Training (KRIVET)
URL	http://www.krivet.re.kr/web-app2/newkrivet-app/k/kkd0101.jsp?menu_code=K200800
Description	KRIVET runs its own digital library of the human resource development database.
Language Support	Korean English

Source	Korea Labor Institute (KLI)
URL	http://klosa.re.kr/KLOSA/default.asp http://www.kli.re.kr/
Description	KLI provides various research papers and labor statistics. In particular, it has been conducting the following major panel studies: - Korea Labor and Income Panel Study - Workplace Panel Study - Korean Longitudinal Study of Ageing
Language Support	Korean English
Source	Korean Longitudinal Survey of Women and Family (KLoWF)
URL	http://survey.hrcglobal.com/KLoWF/
Description	As a nationwide panel survey started in November 2007, the KLoWF will provide cross-sectional and longitudinal data of 10,000 women from 1,500 households, concerning changes of value in work and family, changes in family relationships, and changes in family structure.
Language Support	Korean
Source	National Youth Policy Institute
URL	http://www.nypi.re.kr/panel/index.asp
Description	Korea Youth Panel Survey Data: Longitudinal panel data on the actual life status concerning direction, deviation, leisure, etc. The survey questions were administered to 2nd graders from nationwide middle high schools and 4th graders from nationwide elementary schools. The tracing survey for both grades was done from 2003 until 2008.
Language Support	Korean English (limited)
Source	Korea Social Science Data Archive (KOSSDA)
URL	http://www.kosssda.or.kr/
Description	KOSSDA holds quantitative, qualitative, and archival data that cover all areas of social sciences, including politics, economy, society, psychology, and Korean culture. - Quantitative data: survey data, including KGSS (Korean General Social Survey)/aggregate data - Qualitative data: various records in text, video clips, audio, photos
Language Support	Korean English website under construction

Source	The National Library of Korea
URL	http://www.nl.go.kr/
Description	The National Library of Korea has a collection totaling 6 million volumes. There is a great deal of historical material, including periodicals, monographs, and the colonial government documents and publications (which can be accessed electronically).
Language Support	Korean English Chinese Japanese French German Spanish
Source	The National Assembly Library
URL	http://www.nanet.go.kr/
Description	Through the National Assembly Digital Library, many historical materials, including periodicals, monographs, and the colonial government documents and publications, can be accessed electronically.
Language Support	Korean English
Source	National Archives of Korea
URL	http://www.archives.go.kr/
Description	Archives of public administration. Use the search engine in Korean.
Language Support	Korean
Source	The National Institute of Korean History
URL	http://www.history.go.kr/front/introenglish/viewChairCommitteEn.jsp
Description	The materials are digitalized and are provided to anyone interested. However, the search engine is only available in Korean.
Language Support	Korean English (limited)